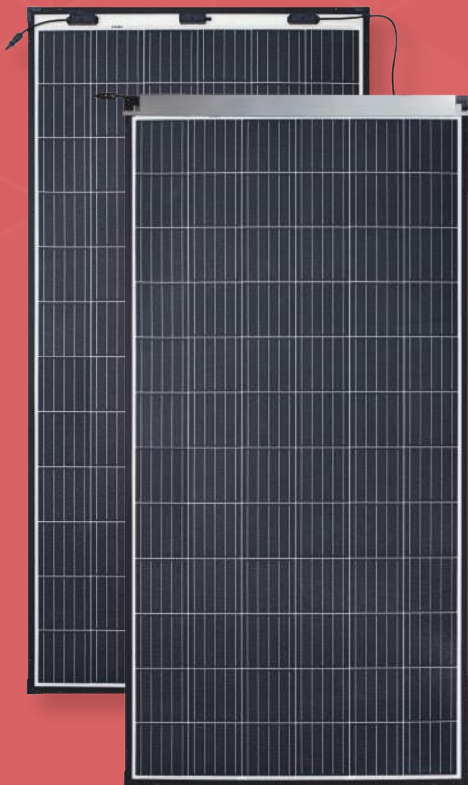


# eArc

## SMD375M-6X12UW

# 375 Watt

## 72 Cell Monocrystalline Module



**Ultra-light:** Glass free module weighs 6.9 kg, 70% lighter than conventional glass modules.



**Fast-Installation:** Through "Quick-Bonding" installation, eArc requires no penetration, reduces time on roof by 40% and eliminates the use of mounting hardware.



**Aesthetic:** Seamless integration with underlying installation surface.



**Durable:** eArc is the first glassless module to pass the same durability tests as conventional glass modules, including IEC 61215:2016 and IEC61730:2016

POWER OUTPUT RANGE 370~375 W

POWER TOLERANCE 0-5 W

MADE IN CHINA

**LINEAR PERFORMANCE WARRANTY**

**10 Year Product Warranty**

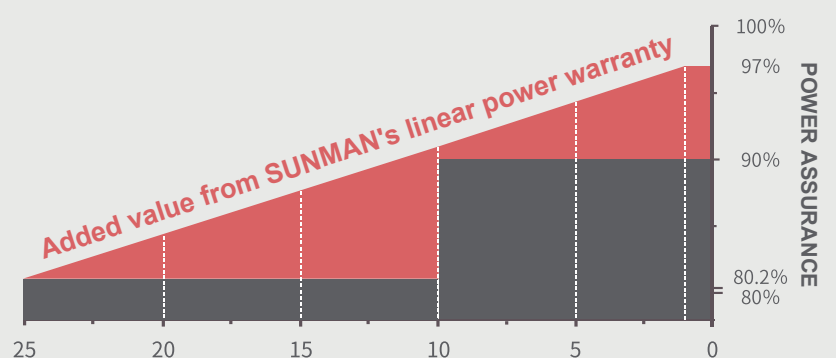
**25 Year Linear Power Warranty**



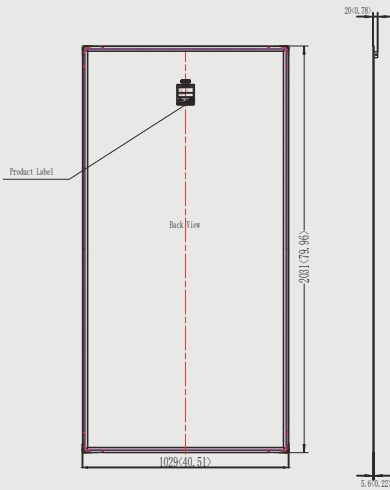
[www.sunman-energy.com](http://www.sunman-energy.com)

CAUTION: Read installation manual before using the product.

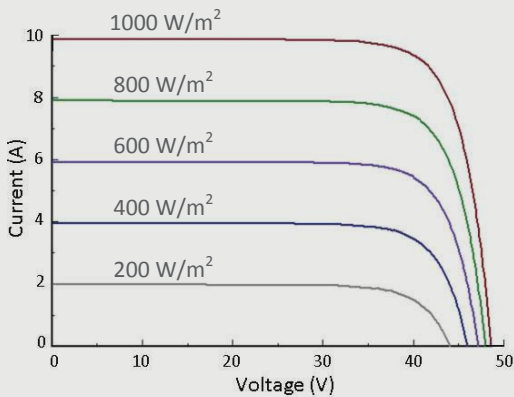
©2020 Sunman (zhenjiang) Co., Ltd. All rights reserved. Specifications included in this datasheet are subject to change without notice.



## DIMENSIONS



## I-V CURVE (375)



## TEMPERATURE CHARACTERISTICS

Nominal Module Operating Temperature(NOMT)	<b>41±2 °C</b>
Temperature Coefficient of $P_{max}$	<b>-0.38 %/°C</b>
Temperature Coefficient of $V_{oc}$	<b>-0.28 %/°C</b>
Temperature Coefficient of $I_{sc}$	<b>0.020 %/°C</b>

Fire resistance:  
C in accordance with UL 790

SMD Series has been certified to install on color-bond steel roof sheeting and Zincalume. Any other roof sheeting install requires consultation with Suman or its local importer

Installation of SMD series requires sika™Sikasil SG 20 Silicone Adhesive.

SMDUW/IEC AU 2020B

## ELECTRICAL CHARACTERISTICS

STC	SMD375M-6X12UW	SMD370M-6X12UW
Maximum Power ( $P_{max}$ )	375	370
Maximum Power Voltage ( $V_{mp}$ )	40.2	39.9
Maximum Power Current ( $I_{mp}$ )	9.33	9.28
Open-circuit Voltage ( $V_{oc}$ )	48.6	48.4
Short-circuit Current ( $I_{sc}$ )	9.86	9.81
Module Efficiency (%)	17.9	17.7
Operating Temperature	-40 °C to 85 °C	
Maximum System Voltage	1000 V DC (IEC)	
Maximum Series Fuse Rating	20 A	
Application Class	Class A	
Power Tolerance	0/+5 W	

STC: Irradiance 1000W/m<sup>2</sup>, Cell temperature 25°C, AM=1.5. Tolerances of  $P_{max}$ ,  $V_{oc}$  and  $I_{sc}$  are within ±5%

NMOT	SMD375M-6X12UW	SMD370M-6X12UW
Maximum Power ( $P_{max}$ )	282	278
Maximum Power Voltage ( $V_{mp}$ )	37.0	36.8
Maximum Power Current ( $I_{mp}$ )	7.63	7.56
Open-circuit Voltage ( $V_{oc}$ )	45.3	45.1
Short-circuit Current ( $I_{sc}$ )	8.07	8.00

NMOT: Irradiance 800W/m<sup>2</sup>, Ambient temperature 20°C, AM=1.5, Wind speed 1 m/s.

## MECHANICAL CHARACTERISTICS

Solar Cell	Monocrystalline silicon (158.75mm)
No. of Cells	72 (6×12)
Module Dimensions	2031×1029×5.6 mm
Weight	6.9kg
Backsheet	White
Frame	Black Anodized Aluminium Alloy
J-box	IP 68 rated
Output Cables	Photovoltaic technology cable 4.0 mm 2, (+)150 / (-)450 mm
Connector	Dawning: C1 

## PACKAGING CONFIGURATION

	20' GP	40' HC
Module per pallet	30+50	50
Pieces per container	400	1000